



CP SYSTEM

CP | SUSPENDED, WALL, SURFACE

STANDARD SIZES

Size options from 12"x12"x12" to 96"x52"x36"
Available in suspended pendant, wall, or surface mount

LAMPING

LED - 3000K/3500K/4000K
Output Options: Decorative/RGB/RGB+W
Dimming down to 0%
Accent Downlights Available (800/1000/1500LM Output Options)

FINISH

18 standard finishes available at no extra charge
RAL classic colors, TCI / Tiger Drylac catalog colors, and custom color match also available

CONSTRUCTION

Industrial Strength Extruded 6061 Aluminum





PRODUCT SUBMITTAL WORKSHEET

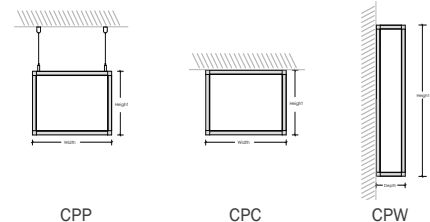
SAMPLE PRODUCT CODE

CPP – A – DECOR/3500 – 0/10V/S – WHT – DL1000/80/3500/25 – HEXSNT – 0/10V/S – 1 – AL – UNV – EMB/1 – OS/1 – COMBO – SB

1 2 3 4 5 6A 6B 6C 6D 7 8 9 10 11A 11B 11c

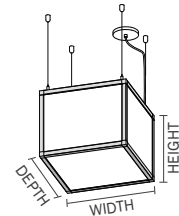
1. BASE MODEL (CHOOSE ONE)

- ☐ **CPP** Pendant — 4 sides and bottom illuminated
- ☐ **CPC** Ceiling-Mount — 4 sides and bottom illuminated
- ☐ **CPW** Wall Sconce — 3 sides and top/bottom illuminated



2. DIMENSIONS (CHOOSE ONE)

- ☐ **A** 12"H x 28"W x 12"D
- ☐ **B** 12"H x 40"W x 12"D
- ☐ **C** 12"H x 52"W x 18"D
- ☐ **D** 12"H x 52"W x 52"D (Not available with CPW)
- ☐ **F** 28"H x 12"W x 12"D
- ☐ **H** 40"H x 12"W x 12"D
- ☐ **J** 52"H x 12"W x 12"D
- ☐ **L** 40"H x 40"W x 28"D
- ☐ _____ Contact ALW for custom dimensions (Enter H" x W" x D") — Height: 12"-96", Width: 12"-52", Depth: 12"-36"



*Lengths are nominal and may vary based on lamping and other specification selections. Consult ALW when exact lengths are required.

3. LED LAMPING — PRIMARY (CHOOSE ONE UNDER A & B, AS NECESSARY)

A. OUTPUT

- ☐ **DECOR**
- ☐ **RGB**
- ☐ **RGBW**

(White Chip: 3500K, 80CRI)

B. CCT¹

- ☐ **3000K**
- ☐ **3500K**
- ☐ **4000K**

RAW LUMENS (LM/FT)	WATTS (W/FT)	EFFICACY (LM/W)
See page 6 for complete details.		Up to 74 lm/W

¹CCT not applicable for RGB or RGBW lamping.

4. DRIVER ^{2,3} — PRIMARY (CHOOSE ONE .STD, DECOR, TUNE & RGB(W) TABLE INDICATES COMPATIBLE LED LAMPING)

- | | | |
|--|--------------|--|
| | DECOR | RGB(W) |
| <input type="checkbox"/> 0/10V/S | ● | 0-10V dimming down to 10% (Standard Dimming) |
| <input type="checkbox"/> 0/10V/1% | ● | 0-10V dimming down to 1% |
| <input type="checkbox"/> 0/10V/0% | ● | 0-10V premium dimming down to 0% |
| <input type="checkbox"/> ECOSYS1 | ● | (L3DAE) Lutron Hi-lume 1% EcoSystem 24V LED Driver |
| <input type="checkbox"/> DALI | ● | DALI flicker-free dimming down to 0% |
| <input type="checkbox"/> DMX | ● ● | DMX flicker-free dimming down to 0% (Select for RGB or RGBW lamping) |

²Driver specifications provided upon request.

³See more information for compatible Driver under 'Sensor Options' for Lutron Vive Control Systems.

SS011020-A.0



5. LENS — PRIMARY (CHOOSE ONE)

- ☐ **LN** Linen-colored, 1/8" acrylic
☐ **WHT** White-white, 1/8" acrylic

6. ACCENT — DOWNLIGHT (CHOOSE NONE OR ONE UNDER A, B, C, & D)

- ☐ **N** None. Select when Accent Downlight Lamping is not desired.

A. SPOT

- ☐ **DL800**
☐ **DL1000**
☐ **DL1500**

B. CRI

- ☐ **80**
☐ **90**

C. CCT

- ☐ **2700K**
☐ **3000K**
☐ **3500K**
☐ **4000K**

D. BEAM SPREAD

- ☐ **25**
☐ **40**

DELIVERED LUMENS (LM)	WATTS (W)	EFFICACY (LM/W)
See page 6 for complete details.		~155+

7. ACCESSORY — ACCENT DOWNLIGHT (CHOOSE ONE)

- ☐ **N** None
☐ **HEX** Hexcell Louver
☐ **SNT** Snoot
☐ **HEXSNT** Both Hexcell louver and Snoot



8. DRIVER — ACCENT DOWNLIGHT (CHOOSE ONE)

- ☐ **N** None. Select when Accent Downlight Lamping is not desired.
☐ **[_____]** Same as Driver — Primary (Step 4)
Note: ECOSYS1 will be (LDE1) Lutron Hi-lume 1% EcoSystem LED driver with Soft-on, Fade-to-Black dimming technology.

6. FINISH (CHOOSE ONE. SEE PAGE 7 FOR LARGER SWATCHES AND ADDITIONAL INFORMATION)

STANDARD FINISHES

ALUMINUM

- ☐ **AL** Anodized Aluminum

BASIC POWDER COAT

- ☐ **GW** Gloss White
☐ **SW** Satin White
☐ **AW** Antimicrobial Satin White
☐ **TW** Textured Matte White
☐ **TB** Textured Matte Black

METALLIC POWDER COAT

- ☐ **SG** Silver Gray
☐ **CG** Charcoal Gray
☐ **CU** Copper
☐ **BR** Brass

SATIN ANODIZED EFFECT POWDER COAT

- ☐ **CS** Clear Silver
☐ **OB** Oil-Rubbed Bronze
☐ **DB** Dark Bronze
☐ **SB** Satin Black

GLOSS POWDER COAT (80-95% GLOSS)

- ☐ **GO** Orange (RAL 2003)
☐ **GR** Red (RAL 3020)
☐ **GM** Magenta (RAL 4010)
☐ **GB** Blue (RAL 5015)

SPECIAL ORDER FINISHES

- ☐ **RAL_____** ☐ Specify RAL Classic Color (Ex: RAL 3003) - Most RAL Colors are available for powder coat. See www.alwusa.com/finishes
☐ **CAT_____** ☐ Specify Catalog Colors - Specify colors from the [Tiger Drylac](#) and [TCI](#) catalogs
☐ **CCM_____** ☐ Custom Color Match - Specify a custom powder coat color match

SS011020-A.0



10. VOLTAGE

☒ **UNV** Universal Voltage (120VAC-277VAC)

11. ADDITIONAL OPTIONS (OPTIONAL — CHOOSE ONE UNDER A, B, & C, IF DESIRED)

A. EMERGENCY OPTIONS

- ☐ **EMB⁴** Emergency Battery
☐ **EMC⁴** Emergency Circuit

⁴Consult ALW for more details.

B. SENSOR OPTIONS (DEFAULT QUANTITY IS 1 SENSOR PER UNIT, INDICATE ALTERNATE QUANTITY IF DESIRED)

- ☐ **FCJS/___⁵** Lutron® Vive remote RF wireless fixture control (Lutron Part: FCJS-ECO or FCJS-010)
☐ **FCJS/S/___⁵** Lutron® Vive remote RF wireless fixture control + daylight/occ sensor (Lutron Part: FCJS-ECO or FCJS-010, & FC-Sensor)
☐ **ENLGH/___⁶** Enlighted® remote connected lighting smart sensor (Enlighted Part: SU-5S-H) (occupancy, daylight, networking, and more)
☐ **OS/___** 0-10V remote occupancy sensor
☐ **PH/___** 0-10V remote photocell/daylight sensor

⁵Lutron® Vive remote sensors are compatible with the following drivers: 0/10V/S, 0/10V/1, 0/10V/0 driver or ECOSYS. Programming required by Lutron Commissioner.

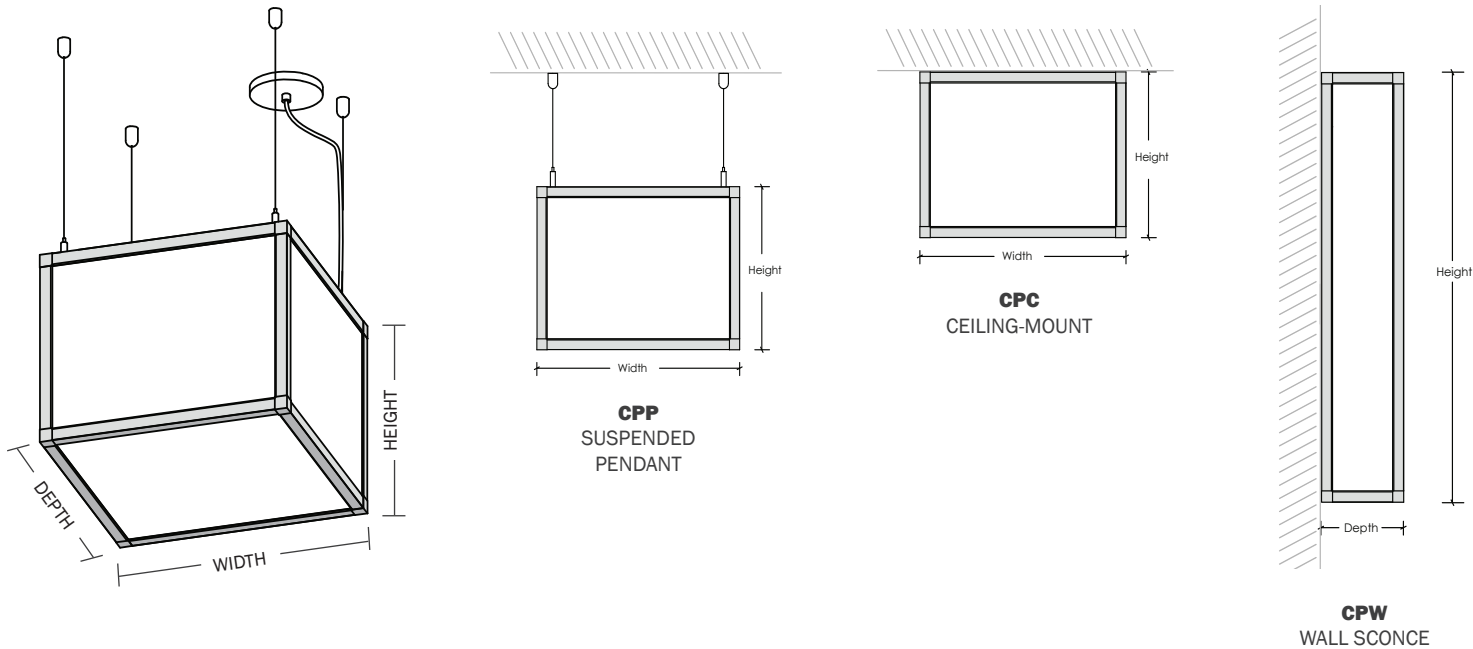
⁶Enlighted® sensors are compatible with the following drivers: 0/10V/S, 0/10V/1, 0/10V/0. Programming required by Enlighted Commissioner. Additional Enlighted sensor families included IoT Sensors and Enlighted One Sensors are also available. Contact Customer Support for more information.

C. ADDITIONAL OPTIONS (COMPATIBLE ONLY WITH SUSPENDED MOUNT)

- ☐ **COMBO** Combination 4.5" canopy at power feed locations to accommodate both power cord & suspension mount hardware.
☐ **SB** Seismic Bracing



MECHANICAL DIAGRAMS – DIMENSIONS



SUSPENSION



CEILING HARDWARE

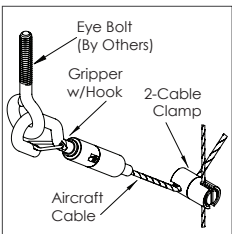
- (1) 4.5" canopy per power feed location,
- (1) bullet mount,
- (1) 8' aircraft cable
- (1) 2" canopy (for use with T-bar mounting) per suspension point



COMBO CANOPY

Choose option COMBO to specify 4.5" canopies at feed locations with power feed and aircraft cable suspension mounting.

Canopy finish is always white. Contact ALW for alternate colors.



SEISMIC BRACING

Add-on hardware includes cable gripper with hook, 2-cable clamp and specified length of aircraft cable per suspension point.

SS011020-A.0



PERFORMANCE DETAILS – PRIMARY LAMPING

OUTPUT	RAW LUMENS (LM/FT)	WATTS (W/FT)	EFFICACY (LM/W)	CRI OPTIONS	CCT OPTIONS
DECOR	439	5.9	74	N/A	3000K 3500K 4000K
RGB	Color-Changing RGB	5	N/A		N/A
RGBW	Color-Changing RGB + 4000K White	5		80	4000K

PERFORMANCE DETAILS – ACCENT/DOWNLIGHT LAMPING

SPOT	DELIVERED LUMENS (LM)	WATTS (W)	EFFICACY (LM/W)	CRI	CCT OPTIONS	BEAM SPREAD OPTIONS (DEGREES)
DL800	800	4.8	167	80	3000K 3500K 4000K	25 40
DL1000	1000	6.1	164			
DL1500	1500	9.7	155			



STANDARD FINISHES

Standard finishes are available at no additional charge.

ALUMINUM



Anodized
Aluminum

BASIC POWDER COAT



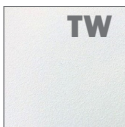
Gloss
White



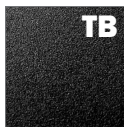
Satin
White



Antimicrobial
Satin
White



Textured
Matte
White



Textured
Matte
Black

METALLIC POWDER COAT



Silver
Gray



Charcoal
Gray



Copper



Brass

SATIN ANODIZED EFFECT POWDER COAT



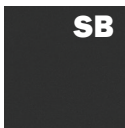
Clear
Silver



Oil-Rubbed
Bronze



Dark
Bronze



Satin
Black

GLOSS POWDER COAT (80-95% GLOSS)



Orange
RAL 2003



Red
RAL 3020



Magenta
RAL 4010



Blue
RAL 5015

SPECIAL ORDER FINISHES*



RAL CLASSIC COLORS (80-95% GLOSS): RAL_ _ _ _

Most RAL Classic Colors are available for a minimum setup fee. On your specification submittal choose your RAL color by entering the 4-digit RAL code (Ex: RAL 3003).

See www.alwusa.com/finishes



CUSTOM COLOR MATCH: CCM_ _ _ _

Custom powder coat color matching is available for a premium setup fee. Consult ALW for additional information.



CATALOG COLORS: CAT_ _ _ _

The complete range of powder coat colors from [Tiger Drylac](#) and [TCl](#) catalogs are available for a minimum setup fee. Consult ALW for a catalog color you would like to specify.

*An individual setup fee will apply to each unique Special Order Finish per purchase order.
(ex: RAL 5023 and RAL 2008 are specified for multiple line items on a purchase order. 2x setup fees will apply)



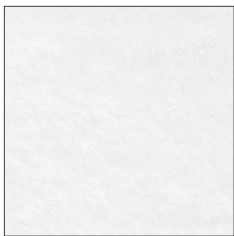
ADDITIONAL OPTIONS & SPECIFICATIONS

ELECTRICAL PERFORMANCE

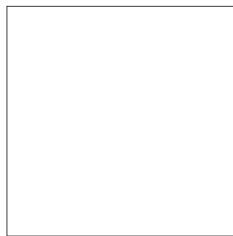
LED drivers are Class 2. Luminous flux +/- 5%.

LENS OPTIONS

Choose from a 1/8" linen-colored, off-white acrylic lens with a slightly textured look or a 1/8" white-white opal acrylic lens. Contact ALW for possible alternatives.



LINEN-COLORED — LN



WHITE-WHITE — WHT

HOUSING

3/4" frame constructed of 100% recyclable, extruded architectural grade 6061 aluminum with a 0.08" minimum wall thickness.

SAFETY & REGULATORY

ETL Listed (U.S. & Canada).
Conforms to UL std. 1598, Luminaires.
Certified to CSA std. C22.2#250.0:2008 Ed. 3+G1;G2.

OPERATING CONDITIONS

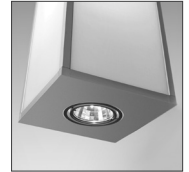
Luminaire should be installed and operated ONLY in environments where the ambient temperature ranges from -4 °F to 122 °F (-20 °C to 50 °C). Luminaire operation in environments outside the listed temperature range voids the warranty AND may damage the product or adversely impact lamp life, lumen output and color consistency.

WARRANTY

Limited 5-year warranty. Details: alwusa.com/warranty

INTEGRAL DOWNLIGHTS

Optional, accent downlights deliver 800-1500 lumens with a beam spread of 25° or 40°. Hex cell (HEX) and snoot (SNT) accessories are also available.



POWER CABLES

Power cables come standard in a transparent sheathing to match steel aircraft suspension cables. Please contact customer support if custom cables are required for your application. Power cables cannot be swapped in the field as it will void the ETL Safety Listing and Product Warranty.



CONTROLS, SENSORS, & LED DRIVER

ALW lighting fixtures are intended for use with a wide range of sensors, lighting controls, LED drivers, and building management systems. Our component portfolio is continually expanding to adopt to the latest technologies and specification needs. We currently support integration with Lutron, Enlighted, EldoLED, nLight, Osram, Philips, and more. If there's a component or system needed that you don't see on the spec sheet please contact ALW customer support today so we can review your requirements.