



ROUND LIGHTPLANE 3

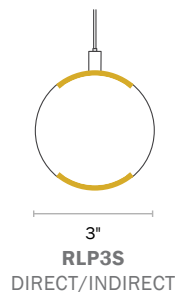
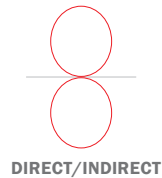
RLP3 | SUSPENDED, WALL



SPECIFICATIONS

PROFILE	3" Diameter
SIZES	Suspended or Stem Mounted Luminaires
LED OUTPUT	650 - 1225 lm/ft
CCT/CRI	80/90 CRI - 2700K/3000K/3500K/4000K
DIMMING/ DRIVER	Integral Driver: 0-10V, DALI, DMX, Lutron®, PoE (Molex, Igor, NuLEDs). Dimming to 0% for select models.
POWER	4.4 – 9.1W/ft
INPUT	120VAC, 277VAC, or 347VAC
OPTICS	Direct, Indirect, Direct/Indirect
FINISHES	16 powder coat finishes Custom finishes also available
MATERIAL	Extruded 6061 Aluminum
ENVIRONMENT	Dry or damp locations

DISTRIBUTIONS & PROFILES



Not to scale. Dimensions are nominal. Consult factory for CAD drawing

*Safety and Performance information available on last page. Output and other specifications available on page 7.



SS011725-A.0

RLP3 – SPECIFICATIONS
SUSPENDED, WALL

ALW-INC.COM



PRODUCT SUBMITTAL WORKSHEET

1	2	3	4	5	6	7	8	9	10	11a	11b	11c
---	---	---	---	---	---	---	---	---	----	-----	-----	-----

EXAMPLE: RLP3S — S10 — MED/90/3500 — V01 — EXT — LOW/90/3500 — V01 — CL — SW — UNV — EMB/1 — AY/xx — SB

1 2 3 4 5 6 7 8 9 10 11a 11b 11c

1. BASE MODEL (CHOOSE 1)	2. LENGTH (ENTER LENGTH IN FEET)	3. LED LAMPING — DIRECT (CHOOSE NONE OR 1)	4. DRIVER* — DIRECT (CHOOSE 1)
RLP3S 3" suspended RLP3SM.6.4 3" wall, stem mount, with 6" arms (for JBOX-4 canopy) RLP3SM.6.2 3" wall, stem mount, with 6" arms (incl. JBOX-2 canopy) RLP3SM.12.4 3" wall, stem mount, with 12" arms (for JBOX-4 canopy) RLP3SM.12.2 3" wall, stem mount, with 12" arms (incl. JBOX-2 canopy) RLP3SM.18.4 ¹ 3" wall, stem mount, with 18" arms (for JBOX-4 canopy) RLP3SM.18.2 ¹ 3" wall, stem mount, with 18" arms (incl. JBOX-2 canopy) RLP3SM.24.4 ¹ 3" wall, stem mount, with 24" arms (for JBOX-4 canopy) RLP3SM.24.2 ¹ 3" wall, stem mount, with 24" arms (incl. JBOX-2 canopy)	S Individual Section (enter length in feet, ex: S5) ¹ Lengths are nominal and may vary based on lamping and other specification selections. Consult ALW when exact lengths are required.	N No direct lamping. A. OUTPUT ² B. CRI ³ C. CCT ⁴ LOW (650 lm/ft) 80 2700K (90 CRI Only) MED (900 lm/ft) 90 3000K HI (1125 lm/ft) 3500K TUNE (2700K-6500K, 80CRI) 4000K RGB RGBW (White Chip: 3500K, 80CRI) ---- ⁵ (Custom. Enter lumens in product code above. Ex. 0100=100lm/ft) ² Certain direct/indirect lamping output combinations are not possible due to heat limitations. See table on page 6 for available options. ³ CRI not applicable for TUNE, RGB or RGBW lamping ⁴ CCT not applicable for TUNE, RGB or RGBW lamping ⁵ Consult ALW for custom lumen packages.	V00 (0-10V, dim to 0%) V01 (0-10V, dim to 1%) V05 (0-10V, dim to 5%) LDE1 (Lutron ECOSYS1, 0-10V, dim to 1%) DALI (DALI, dim to 0%) DMX (DMX, dim to 0%) TSERIES (Lutron Tuneable White) POEM (POE Molex) POEI (POE IGOR) POEN (POE Nuleds) POE ⁶ (POE Ready) ⁶ See 'Driver' and lamping charts for driver details and compatibility. ⁷ Choose desired PoE solution not listed. Contact customer service to review and confirm the PoE system of your choice.

¹Lengths are nominal and may vary based on lamping and other specification selections. Consult ALW when exact lengths are required.
²Tie-back suspension cables are added for support of arms 18" and longer.

5. LENS - DIRECT (CHOOSE 1)	6. LED LAMPING — INDIRECT (CHOOSE NONE OR 1)	7. DRIVER* — INDIRECT (CHOOSE 1)	8. LENS — INDIRECT (CHOOSE 1)
N No direct lamping. EXT Extra diffuse HT High transmission, clear lens with frosted film	N No indirect lamping. A. OUTPUT ² B. CRI ³ C. CCT ⁴ LOW (650 lm/ft) 80 2700K (90 CRI Only) MED (900 lm/ft) 90 3000K HI (1125 lm/ft) 3500K TUNE (2700K-6500K, 80CRI) 4000K RGB RGBW (White Chip: 3500K, 80CRI) ---- ⁵ (Custom. Enter lumens in product code above. Ex. 0100=100lm/ft) ² Certain direct/indirect lamping output combinations are not possible due to heat limitations. See table on page 6 for available options. ³ CRI not applicable for DECOR, TUNE, RGB or RGBW lamping ⁴ CCT not applicable for TUNE, RGB or RGBW lamping ⁵ Consult ALW for custom lumen packages.	V00 (0-10V, dim to 0%) V01 (0-10V, dim to 1%) V05 (0-10V, dim to 5%) LDE1 (Lutron ECOSYS1, 0-10V, dim to 1%) DALI (DALI, dim to 0%) DMX (DMX, dim to 0%) TSERIES (Lutron Tuneable White) POEM (POE Molex) POEI (POE IGOR) POEN (POE Nuleds) POE ⁶ (POE Ready) ⁶ See 'Driver' and lamping charts for driver details and compatibility. ⁷ Choose desired PoE solution not listed. Contact customer service to review and confirm the PoE system of your choice.	N No indirect lamping. EXT Extra diffuse HT High transmission, clear lens with frosted film CL Clear lens, highest transmission value (LEDs will be visible)

CONTINUES ON NEXT PAGE



PRODUCT SUBMITTAL WORKSHEET

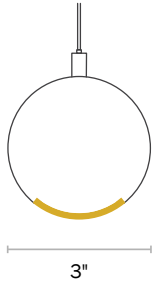
9. FINISHES* (CHOOSE 1)	10. VOLTAGE (CHOOSE 1)	11a. EMERGENCY OPTIONS (CHOOSE 1)	11b. CONTROL OPTIONS* (OPTIONAL)
STANDARD FINISHES SW <input type="checkbox"/> Satin White SB <input checked="" type="checkbox"/> Satin Black AS <input type="checkbox"/> Aluminum Silver Anodized Effect TB <input checked="" type="checkbox"/> Textured Black PREMIUM FINISHES -- See chart on page 6 for premium finishes. Manually type in the finish code (Ex: OB = Oil-Rubbed Bronze) SPECIAL ORDER FINISHES* RAL _____ Specify RAL Classic Color (Ex: RAL 3003) CCM _____ Custom Color Match <small>*Manually type in the finish code for special order finishes types</small>	UNV Universal Voltage (120VAC-277VAC) 347 347 Volt (Driver options may be limited. Not available with EMB)	EMB/___ * Emergency Battery (indicate QTY – each battery powers 4ft. section @ 1492lm. Not available in 347 V) EMC/___ * Emergency Circuit (indicate QTY of 4ft sections to be illuminated by emergency circuit) <small>*For fixtures under 4ft in length, entire fixture will be illuminated with a proportional lumen output. Consult ALW for more details.</small>	N None FACTORY CONTROLS OS/PH/INT/___ Integral Occupancy/Daylight sensor OS/PH/HV/___ Remote Occupancy/Daylight sensor NETWORK CONTROLS <small>Embedded controls below are placeholder specs. See the ALW Controls Guide to finalize your final control spec.</small> AY/xx Acuity AN/xx Avi-on CA/xx Casambi CW/xx/___ Cooper Wavelinx EC/xx/___ Encelium EN/xx/___ Enlighted LU/xx/___ Lutron NX/xx/___ NX Controls WA/xx/___ Wattstopper <small>*Quickship availability on occupancy and photocell daylight sensors may vary. Contact ALW for more information. *Contact ALW for Additional Zone specifications</small>

11c. ADDITIONAL OPTIONS (OPTIONAL)*
SB Seismic Bracing
<small>*Compatible only WITH Suspended MOUNT</small>

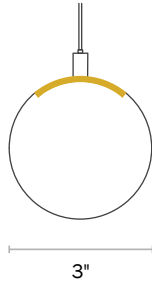


MECHANICAL DIAGRAMS — MOUNTING & DIMENSIONS

SUSPENDED



RLP3S
DIRECT

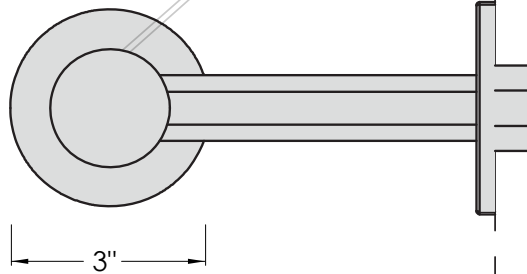


RLP3S
INDIRECT



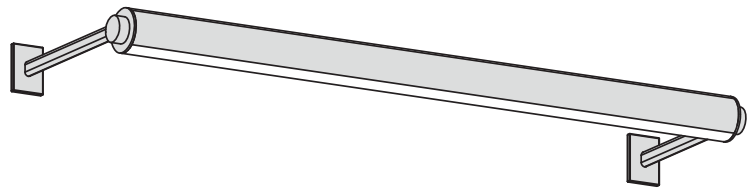
RLP3S
DIRECT/INDIRECT

Stem Mount



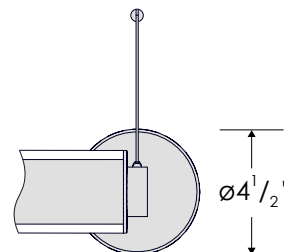
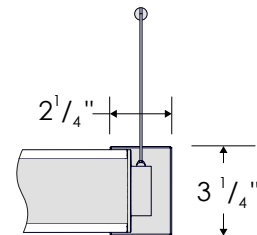
The field-adjustable light
channel rotates up to 330°

RLP3SM
STEM-MOUNT (SHOWING TIE BACKS)



JBOX2

(2-1/4" CANOPY WITH INTEGRAL SPLICE BOX PROVIDED BY ALW)

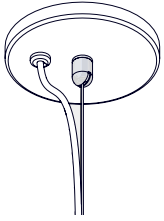


JBOX4

(4-1/2" CANOPY WITH INTEGRAL SPLICE BOX; BY OTHERS)

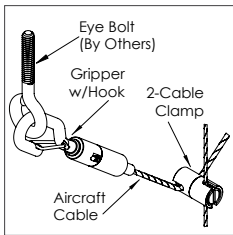


SUSPENSION MOUNTING OPTIONS



CEILING HARDWARE

- 4.5" canopy per power feed location. Canopy finish is always white. Contact ALW for alternate colors.
- Bullet mount,
- 8' aircraft cable
- 2" canopy (for use with T-bar mounting) per suspension point



SEISMIC BRACING (SB)

Add-on hardware includes cable gripper with hook, 2-cable clamp and specified length of aircraft cable per suspension point.



FINISHES

Standard finishes are available at no additional charge.

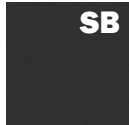
STANDARD FINISHES



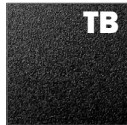
Satin
White



Aluminum Silver
Anodized Effect



Satin
Black



Textured
Black

PREMIUM FINISHES

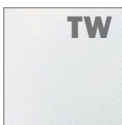
BASIC POWDER COAT



Gloss
White



Antimicrobial
Gloss White

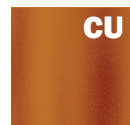


Textured
Matte
White

METALLIC POWDER COAT



Charcoal
Gray



Copper



Brass

SATIN ANODIZED EFFECT POWDER COAT



Oil-Rubbed
Bronze



Dark
Bronze

GLOSS POWDER COAT (80-95% GLOSS)



Orange
RAL 2003



Red
RAL 3020



Magenta
RAL 4010



Blue
RAL 5015

Contact ALW Quotes for sample paint finish swatches.

SPECIAL ORDER FINISHES*



RAL CLASSIC COLORS (80-95% GLOSS): RAL_ _ _ _

Most RAL Classic Colors are available for a minimum setup fee. On your specification submittal choose your RAL color by entering the 4-digit RAL code (Ex: RAL 3003). See www.alw-inc.com/resources/finishes



CUSTOM COLOR MATCH: CCM_ _ _ _

Custom powder coat color matching is available for a premium setup fee. Consult ALW for additional information.

*An individual setup fee will apply to each unique Special Order Finish per purchase order.
(ex: RAL 5023 and RAL 2008 are specified for multiple line items on a purchase order. 2x setup fees will apply)

*Printed or on-screen colors are only approximations - consult actual Color Chip Set before specifying



PERFORMANCE DETAILS — DIRECT OR INDIRECT LAMPING

OUTPUT	LUMENS (LM/FT) <i>Ext Lens</i>	LUMENS (LM/FT) <i>HT Lens</i>	WATTS (W/FT)	EFFICACY (LM/W) <i>Ext Lens</i>	EFFICACY (LM/W) <i>HT Lens</i>	CRI OPTIONS	CCT OPTIONS
LOW ⁷	650	700	5.3	Up to ~123	Up to ~134	80 90	2700K (90CRI Only) 3000K 3500K 4000K
MED ⁷	900	975	7.2				
HI ⁷	1125	1225	9.1				
TUNE	WW: 448 CW: 493 Total: 941	WW: 488 CW: 537 Total: 1025	8.8	Up to ~112	Up to ~122	N/A	2700K-6500K
RGB ⁸	RGB: 132	RGB: 143	4.4	N/A	N/A	80 (White Chip)	N/A
RGBW ⁹	RGB: 132 RGB+W: 342 White Only: 210	RGB: 143 RGB+W: 372 White Only: 229	4.4				3500K (White Chip)

⁷Performance calculations are based on the following LM-79 test: 4000K, 80CRI, HIGH output. MED and LOW values are extrapolated distributions.

⁸Performance calculations are derived from LM-79 test with all RGB LEDs illuminated (Red, Green, Blue).

⁹Performance calculations are derived from the following LM-79 tests: 1) RGB LEDs illuminated, 2) RGB+W LEDs illuminated, 3) White LED only illuminated.

LED OUTPUT PAIRING OPTIONS

		INDIRECT			
		NONE	LOW	MED	HI
DIRECT	NONE		●	●	●
	LOW	●	●	●	
	MED	●	●		
	HI	●			

Limitations exist due to heat. Please follow above guidelines when specifying.



DRIVERS

PRODUCT CODE	DESCRIPTION
V00	0-10V dimming down to 0%
V01	0-10V dimming down to 1%
V05	0-10V dimming down to 5%
DALI	DALI flicker-free dimming down to 0%.
DMX	DMX flicker-free dimming down to 0%.
LDE1	ECOSYS1, (LDE1) Lutron Hi-lume 1% EcoSystem LED driver with Soft-on, Fade-to-Black dimming technology
TSERIES	Lutron T-Series Tunable White Class 2 LED Driver (For use with Lutron Quantum Control Systems)
POEM	POE MOLEX. Molex CoreSync PoE LED Driver dimming down to 0.1%
POEI	IGOR PoE LED Driver. Contact ALW to assist with your project.
POEN	NuLEDS PoE LED Driver. Contact ALW to assist with your project.
POE	PoE Ready LED Driver. Contact ALW to assist with your project.

*Most drivers can be programmed to specific dimming levels if desired. Contact ALW for specific dimming level requests.
ALW lighting fixtures are intended for use with a wide range of sensors, lighting controls, LED drivers, and building management systems. If there are specific components required for your application that aren't listed on this spec sheet, please contact ALW customer support today to specify a compatible solution of your choice.

DRIVER/LED LAMPING COMPATIBILITY						
	STD	TUNE	RGB	RGB(W)	CA TITLE 24 JA8/JA10 ¹⁰	IEEE P1789 & HD TV STUDIO ¹¹
V00	●	●			●	
V01	●	●			●	
V05	●	●			●	
DALI	●	●			●	
DMX	●	●		●	PER REQUEST	PER REQUEST
LDE1	●				●	●
TSERIES		●			●	●
POEM	PER REQUEST				●	●
POEI	PER REQUEST				●	●
POEN	PER REQUEST				●	●
POE	PER REQUEST				●	●

● - Indicates compatibility

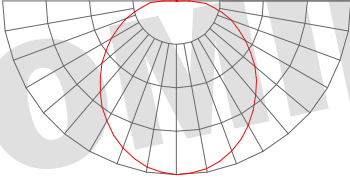
*Standard lamping (STD) - LOW/MED/HI

¹⁰Fixtures specified with 90CRI 3000K, 3500K, and 4000K lamping with applicable LED drivers have the ability to conform to California Title 24 JA8 and JA10 Appendices

¹¹The following drivers conform to IEEE P1789 Flicker Standard: 'IEEE Recommended Practices for Modulating Current in High-Brightness LEDs for Mitigating Health Risks to Viewers'. These drivers may also be installed in HD TV Studio applications utilizing high frequency camera equipment.



PHOTOMETRICS

OPTIC	POLAR PLOT (CD)	MTG HEIGHT	LIGHT LEVEL (FC)	SPACING CRITERION (SC) ¹² (0° - 180°) (90° - 270°)	MAX INTENSITY (CD)	OUTPUT (LM/FT)
DIFF		6 ft	-	-	-	1225
		8 ft	-			
		10 ft	-			
		12 ft	-			
		14 ft	-			
		16 ft	-			

* Photometric calculations based on HI 4000K 80 CRI fixture combination. Actual results may vary in the field. For footcandle and output multipliers refer to the [ALW IES File Multipliers Chart](#)

¹² Spacing criterion refers to maximum distance luminaires can be spaced to provide uniform illumination on the working plane or surface.
 Luminaire spacing = Spacing Criterion (SC) x Mounting Height (MH) (ex. 1.14 (SC) x 10' (MH) = 11.4' Luminaire Spacing).



ADDITIONAL OPTIONS & SPECIFICATIONS

LED PERFORMANCE

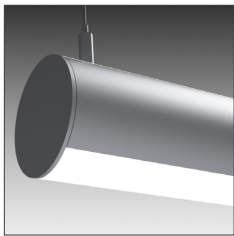
Class 2 LED drivers. L70 > 54,000 hours.
80+ CRI. Luminous flux +/- 5%.

HOUSING

100% recyclable, extruded architectural grade 6061 aluminum with a 0.08" minimum wall thickness.

LENS OPTIONS

Extruded, twin-layered, high-impact acrylic. EXT is white and extra diffuse with minimal- to no-source visibility. HT is high transmission and clear with a frost film with minimal- to no-source visibility. CL is clear with the highest light output, but has source visibility



EXT and HT Lens

SAFETY & REGULATORY

Fixtures specified with 90CRI, 2700K, 3000K, 3500K, and 4000K lamping with applicable LED drivers have the ability to conform to California Title 24 JA8 and JA10 Appendices. EldoLED drivers can conform to IEEE P1789 Flicker Standard: 'IEEE Recommended Practices for Modulating Current in High-Brightness LEDs for Mitigating Health Risks to Viewers'.

Contact [ALW customer support](#) today and we can help you with your project requirements.

ETL Listed (U.S. & Canada). Suitable for dry or damp locations. Conforms to UL std. 2108, Luminaires. Certified to CSA std. C22.2#250.0:2008 Ed. 3+G1;G2.

WARRANTY

Limited 11-year warranty. Details at alw-inc.com/warranty

OPERATING TEMPERATURE

Luminaire should be installed and operated ONLY in dry or damp locations where the ambient temperature ranges from -4 °F to 122 °F (-20 °C to 50 °C). Luminaire operation in environments outside the listed temperature range voids the warranty AND may damage the product or adversely impact lamp life, lumen output and color consistency.

POWER CABLES

Power cables come standard in a transparent sheathing to match steel aircraft suspension cables. Please contact customer support if custom cables are required for your application. Power cables cannot be swapped in the field as it will void the ETL Safety Listing and Product Warranty.



CONTROLS, SENSORS, & LED DRIVER

ALW lighting fixtures are intended for use with a wide range of sensors, lighting controls, LED drivers, and building management systems. Our component portfolio is continually expanding to adopt to the latest technologies and specification needs. We currently support integration with Lutron, Enlighted, nLight, Cooper Wavelinx, eldoLED, Molex PoE, NuLEDs PoE, Igor PoE, Osram, Philips, and more. If there's a component or system needed that you don't see on the spec sheet please contact [ALW customer support](#) today so we can review your requirements.

WEIGHT

Approximately 1.5 lbs. per linear foot (not including downlight option). Weight may vary depending on mounting, downlight, and additional options selected.