



TUBE 300 LX

UP + DOWN SCONCE

PROJECT

Job		Notes
Type		
Part #		

SPECIFICATIONS

- Source** Two Xicato XTM LED modules - up to 3000 lumens each
- CCT** 2700K, 3000K, 3500K or 4000K
- Color Consistency** 1x2 SDCM (MacAdam) along BBL, CCT +/- 40K to 70K, Duv +/- .001
- CRI (Ra)** 83 or 98
- Driver / Location** Included / Remote mount or deep canopy options
- Dimming** 0-10V or phase dimming to 10% standard; DALI, DMX and 1% dimming available
- Input Voltage** 100 to 277VAC, phase dimmable versions are 120VAC only
- Power** Up to 47 watts max, depending on LED module / driver
- Diffuser** Satinice Acrylic
- Material** CNC machined aluminum, stainless steel hardware
- Finish** Powder coat - TGIC polyester for exterior and interior use
- Weight** 5 lb. [2.3 kg]
- Location** Listed for Wet & Damp locations
- Approvals** ETL Listed to UL 1598, 2108, 8750 and CSA C22.2# 9 & #250.0
- L80 Life** > 50,000 hours at 80% lumen maintenance based on IESNA LM-80-08
- Warranty** Lifetime Limited Warranty - see warranty for details
- IES Files** LM-79-08 IES files available
- Modifications** Any modification or customization is possible - consult factory



ORDERING LOGIC

Model	Driver Location	Dimming	# of Circuits	Mounting Location	Up Direction				Down Direction				Shell Color	Options
					Output	CRI *	C.C.T.	Diffuser Length	Output	CRI *	C.C.T.	Diffuser Length		
T3LU														
	R =Remote	N =None	1	D =Damp	07 =700lm	83 =83	27 =2700K	22 =22"	07 =700lm	83 =83	27 =2700K	22 =22"	XX (see chart on page 4)	
	D =Deep	P =Phase	2	W =Wet	10 =950lm	98 =98*	30 =3000K	46 =46"	10 =950lm	98 =98*	30 =3000K	46 =46"		
	Canopy	V =0-10V			13 =1300lm		35 =3500K	70 =70"	13 =1300lm		35 =3500K	70 =70"	ZZ =Custom	
		Z =Other			20 =2000lm		40 =4000K	94 =94"	20 =2000lm		40 =4000K	94 =94"		
					30 =3000lm			ZZ =Custom	30 =3000lm			ZZ =Custom		

* 98 CRI not available in 3000 lm

Example Part Number: **T3LU-RN1D-13832722-20832722-S3**

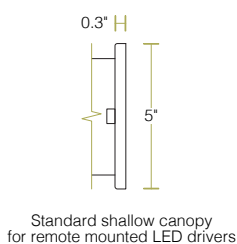
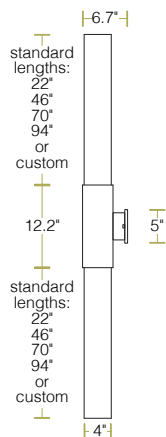
TUBE 300 LX Up + Down Sconce • Remote Driver, **No** Dimming, **1** Circuit, **Damp** Location • UP= **1300** lm, **83** CRI, **2700K**, **22"** Tube length-DOWN=**2000** lm, **83** CRI, **2700K**, **22"** Tube length - **S3** Red Shell



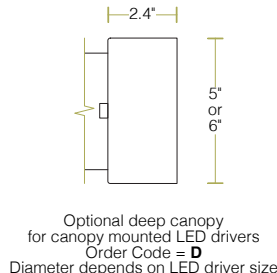
TUBE 300 LX

UP + DOWN SCONCE

DIMENSIONS



Standard shallow canopy for remote mounted LED drivers



Optional deep canopy for canopy mounted LED drivers
Order Code = **D**
Diameter depends on LED driver size

All canopies fit standard 3.5" and 4" round and octagonal junction boxes

Custom diffuser tube lengths may be specified. Max length = 94"

Not to scale, dimensions are nominal
Consult factory for CAD drawings

LED OPTIONS

LED Specifications			
CRI	Lumens ^{1,2,3}	Wattage ⁴ (W)	Efficacy ⁵ (lm/W)
Ra = 83 ±3	700	5.6	129
	950	8.2	118
	1300	11.7	111
	2000	19.5	102
Ra = 98 R9 ≥ 90 R15 ≥ 95	700	7.4	97
	950	10.9	89
	1300	15.6	83
	2000	26.4	76

¹ ±10%

² Source lumens - see photometrics on page 3 for LOR to calculate delivered lumens

³ Higher lumen outputs are available in CORE / QUBE 400 series

⁴ Maximum luminaire wattage including LED driver = LED wattage x 1.2

⁵ Higher efficacies are available via lower drive currents - consult factory

CONTROL OPTIONS

Standard LED Drivers* (included in base price)	Order Code V = 0-10V dimming to 10%
	Order Code P = Phase dimming to 10% Compatible with both forward and reverse phase dimmers
Optional LED Drivers*	eldoLED 0-10V, DALI, or DMX dimming to 0%
	Lutron Hi-lume™ A-series, EcoSystem or forward phase dimming to 1% Lutron Hi-lume™ 5-series, EcoSystem dimming to 5%

* Standard LED drivers are suitable for Wet Location

* Optional LED drivers are suitable for Damp Location

* All LED drivers must be mounted in a deep canopy or remote

* Dual LED drivers available for independent Up + Down control

* Choosing different lumen outputs for Up + Down may require dual drivers
Consult factory for details

* For EM applications:

All LED drivers may be used with 3rd party inverter style systems



TUBE 300 LX

UP + DOWN SCONCE

PHOTOMETRICS

LM-79-08 IES files available

Tube Length	Order Code	Intensity Plot (cd) (2000lm)	Polar Plot (cd) (2000lm)	Cone Diagram (2000lm)
22"	22			<p>Illuminance at Center</p> <p>Beam Diameter</p> <p>5' 287 fc 0.7'</p> <p>10' 72 fc 1.4'</p> <p>15' 32 fc 2.1'</p> <p>20' 18 fc 2.8'</p>
46"	46			<p>Illuminance at Center</p> <p>Beam Diameter</p> <p>5' 211 fc 0.5'</p> <p>10' 53 fc 1.0'</p> <p>15' 23 fc 1.5'</p> <p>20' 13 fc 2.0'</p>
70"	70			<p>Illuminance at Center</p> <p>Beam Diameter</p> <p>5' 125 fc 0.5'</p> <p>10' 31 fc 1.0'</p> <p>15' 14 fc 1.4'</p> <p>20' 8 fc 1.9'</p>
94"	94			<p>Illuminance at Center</p> <p>Beam Diameter</p> <p>5' 75 fc 0.5'</p> <p>10' 19 fc 1.0'</p> <p>15' 8 fc 1.4'</p> <p>20' 5 fc 1.9'</p>



TUBE 300 LX

UP + DOWN SCONCE

COLOR OPTIONS

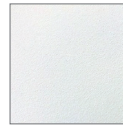
Basic Powder Coat



GW
Gloss White



SW
Satin White
AW Antimicrobial option



TW
Textured
Matte White

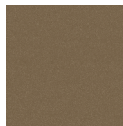


TB
Textured
Matte Black

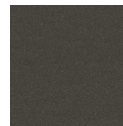
Satin Anodized Effect Powder Coat



CS
Clear Silver



OB
Oil-Rubbed
Bronze



DB
Dark Bronze



SB
Satin Black

Metallic Powder Coat



SG
Silver Gray



CG
Charcoal
Gray



CU
Copper



BR
Brass

Gloss Powder Coat (80-95% Gloss)



GO
Orange
(RAL 2003)



GR
Red
(RAL 3020)



GM
Magenta
(RAL 4010)



GB
Blue
(RAL 5015)

Aluminum



BA
Brushed Aluminum
Cost adder applies.

Special Order



RAL _ _ _ _
Most RAL Classic Colors (80-95% Gloss) are available for powder coat - consult ALW. Minimum setup fee applies. See: alwusa.com/finishes for more information



CAT _ _ _ _
The complete range of powder coat colors from the Tiger Drylac and TCI catalogs are available - consult ALW. Minimum setup fee applies.

Custom



CCM _ _ _ _
Custom powder coat color matching is available - consult ALW. Premium setup fee applies.

Printed or on-screen colors are only approximations - consult actual Color Chip Set before specifying
Note: An individual setup fee will apply to each unique Special Order/Custom Finish per purchase order.
(ex: RAL 5023 and RAL 2008 are specified for multiple line items on a purchase order. 2x setup fees will apply)



TUBE 300 LX

UP + DOWN SCONCE